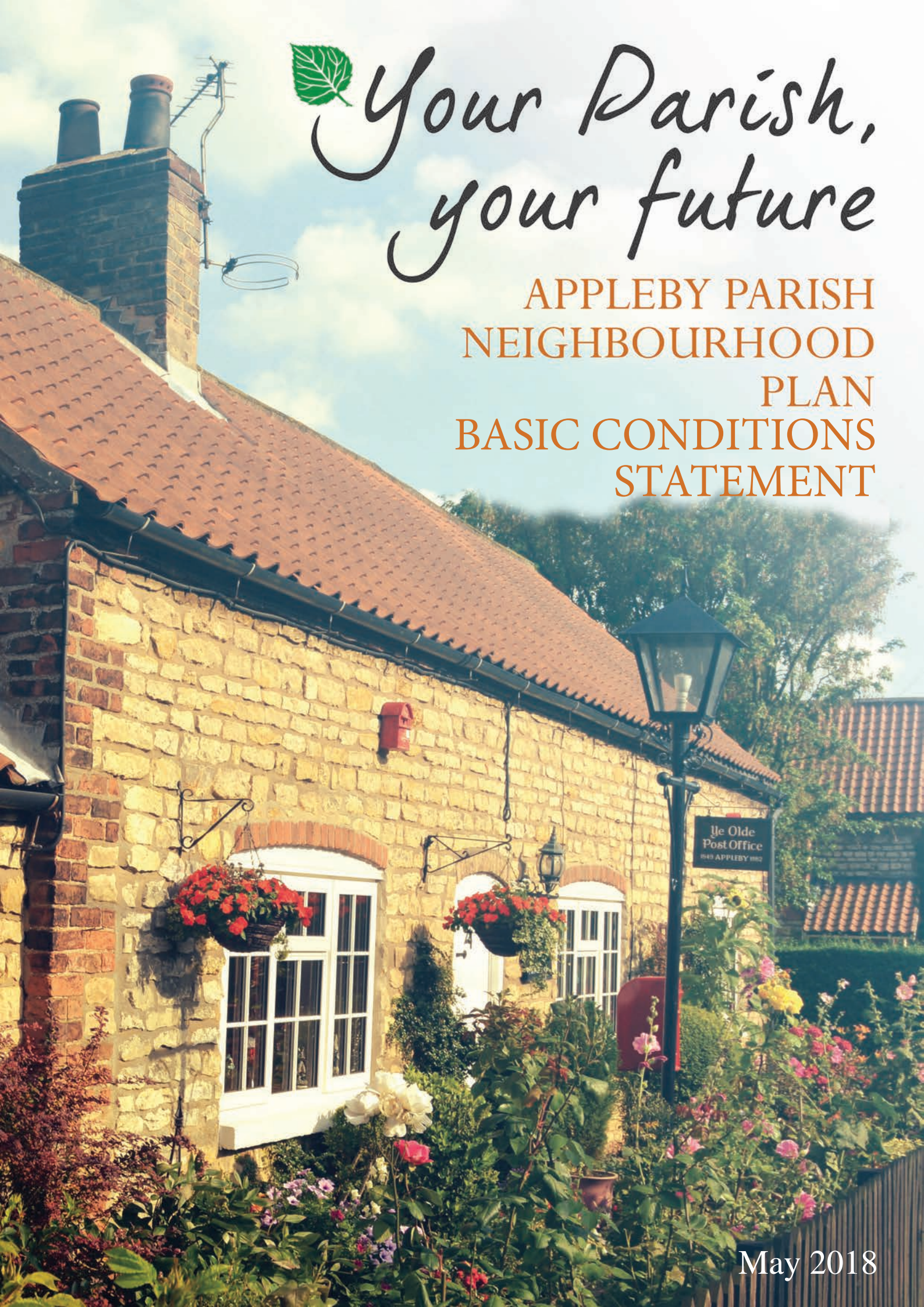




Your Parish, your future

APPLEBY PARISH NEIGHBOURHOOD PLAN BASIC CONDITIONS STATEMENT



May 2018

Contents

Legal Requirements	5
What is being proposed is a Neighbourhood Plan	6
The proposed Neighbourhood Plan states the period for which it is to have effect	6
The policies do not relate to excluded development.....	6
Basic Conditions	7
Have Appropriate Regard to National Policy	7
Table 1: Neighbourhood Plan Objectives.	9
Table 2: Neighbourhood Plan Objectives, Policies and Conformity with the NPPF.....	10
Contribute to the Achievement of Sustainable Development	15
Table 3: How Neighbourhood Plan Policies Contribute to the Achievement of Sustainable Development	15
General Conformity with Strategic Local Policy.....	18
Table 4. General Conformity with Strategic Local Policy	18
Be Compatible with EU Obligations	19
Conclusion	20
APPENDIX 1	21
North Lincolnshire Local Plan Policies	21
Chapter 1 - Strategy:	21
Chapter 2 - Population and Housing:	21
Chapter 4 - Rural Development:	21
Chapter 7 - Transportation:	22
Chapter 8 - Leisure and Recreation:	22
Chapter 9 - Community Facilities:.....	23
Chapter 10 – Landscape and Conservation:.....	23
Chapter 11 – The Ironstone Gulleys:	23
Chapter 12 – The Historic Environment:	24
Chapter 15 - Development Standards:	24
APPENDIX 2.....	25
Core Strategy Policies.....	25

1 Legal Requirements

1.1 This Basic Conditions Statement has been prepared to accompany the Appleby Parish Neighbourhood Plan. Paragraph 8 of Schedule 4B to the Town and Country Planning Act 1990 requires that Neighbourhood Plans (NP) must meet the following basic conditions:

- the draft NP must have appropriate regard to national policies and advice contained in the National Planning Policy Framework (NPPF);
- the draft NP must contribute to the achievement of sustainable development;
- the draft NP must be in general conformity with the strategic policies contained in the development plan for the area of the local planning authority, in this case North Lincolnshire Council's Local Plan 2003, North Lincolnshire Core Strategy 2011, and Housing and Employment Land Allocations Document 2016; and
- the draft NP must meet the relevant EU obligations.

1.2 The Appleby Parish NP is being submitted by Appleby Parish Council for the Parish area of Appleby. The map below shows the extent of the NP boundary. The proposed NP does not relate to more than one Neighbourhood Area and there are no other Neighbourhood Plans in place within the Neighbourhood Area.

1.3 The Plan applies to the whole Parish of Appleby in the Appleby and Broughton Ward within the County of North Lincolnshire.

1.4 In accordance with the Neighbourhood Planning Regulations 2012, an application for designation was submitted to North Lincolnshire Council by Appleby Parish Council (the Qualifying Body). The Council publicised the application and advertised the designation for six weeks from 15th September to 27th October 2014 to allow any comments to be made on it. The application was designated by North Lincolnshire Council on 18 December 2014.

1.5 The approved NP designated area is shown in figure 1.

1.6 The Draft Appleby NP was made available for consultation in accordance with Regulation 14 of the Neighbourhood Plan Regulations from the 5th February 2018 until the 18th March 2018. Some minor amendments have been made to the document based on the comments received which are summarised in the document entitled 'Consultation Statement'

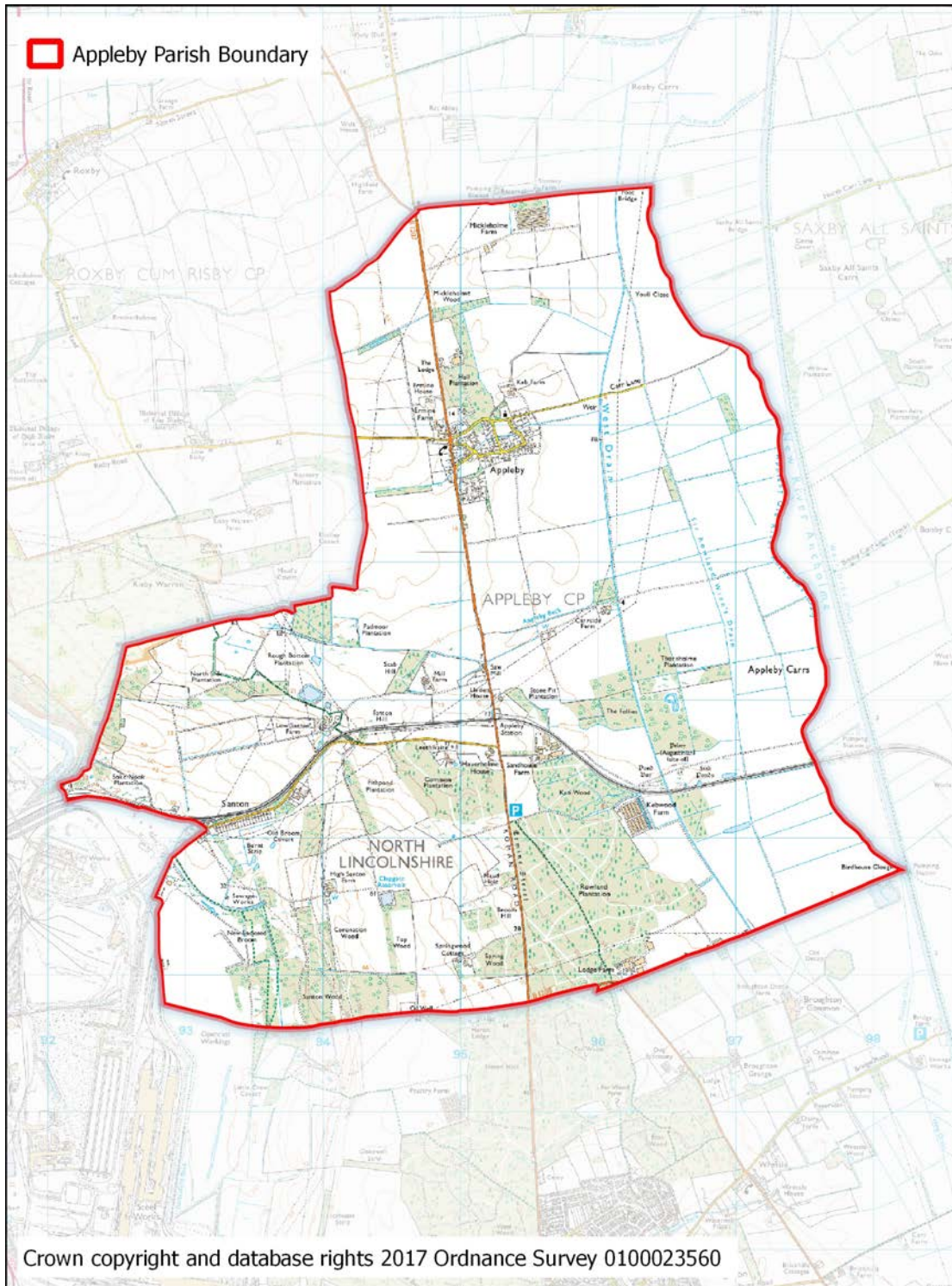
What is being proposed is a Neighbourhood Plan

1.7 The proposed NP relates to planning matters (the use and development of land) having been prepared in accordance with the statutory requirements and processes set out in the Town and Country Planning Act 1990 (as amended by the Localism Act 2011) and the Neighbourhood Planning Regulations 2012.

The proposed Neighbourhood Plan states the period for which it is to have effect

1.8 The Neighbourhood Plan for Appleby will cover the period 2018 until 2030.

1.9 Figure 1: Appleby Parish Neighbourhood Plan Designated Area



The policies do not relate to excluded development

1.10 The Neighbourhood Plan proposal does not deal with county matters (mineral extraction and waste development), nationally significant infrastructure projects or any other matters set out in Section 61K of the Town and Country Planning Act 1990.

2 Basic Conditions

Have Appropriate Regard to National Policy

- 2.1 Regard to national policy and guidance: The National Planning Policy Framework (NPPF) was published in March 2012. The NPPF provides a framework within which local communities can produce Neighbourhood Plans for their area, and sets out how planning should help achieve sustainable development.
- 2.2 Sections 183 - 185 of the NPPF refers to Neighbourhood Plans requiring them to have regard to the policies in the NPPF and to be in general conformity with the strategic policies of the Local Plan. The Localism Act explains that this is the 'adopted Development Plan'.
- 2.3 The NPPF retains the 'presumption in favour of sustainable development', as defined by five principles:
- 1 living within the planet's environmental limits;
 - 2 ensuring a strong, healthy and just society;
 - 3 achieving a sustainable economy;
 - 4 promoting good governance; and
 - 5 using sound science responsibly
- 2.4 In addition, the NPPF embraces three critical roles for sustainable development:
- 1 an economic role contributing to a strong, responsive, competitive economy;
 - 2 a social role supporting vibrant and healthy communities and
 - 3 an environmental role protecting and enhancing our natural, built and historic environment
- 2.5 The NPPF also recognises twelve core planning principles.
- 2.6 Within the overarching roles that the planning system ought to play, a set of core land-use planning principles should underpin both plan-making and decision-taking. These 12 principles are that planning should:
- be genuinely plan-led, empowering local people to shape their surroundings, with succinct local and neighbourhood plans setting out a positive vision for the future of the area. Plans should be kept up to date and be based on joint working and cooperation to address larger than local issues. They should provide a practical framework within which decisions on planning applications can be made with a high degree of predictability and efficiency;
 - not simply be about scrutiny, but instead be a creative exercise in finding ways to enhance and improve the places in which people live their lives;
 - proactively drive and support sustainable economic development to deliver the homes, business and industrial units, infrastructure and thriving local places that the country needs. Every effort should be made objectively to identify and then meet the housing, business and other development needs of an area, and respond positively to wider opportunities for growth. Plans should take account of market signals, such as land prices and housing

affordability, and set out a clear strategy for allocating sufficient land which is suitable for development in their area, taking account of the needs of the residential and business communities;

- always seek to secure high quality design and a good standard of amenity for all existing and future occupants of land and buildings;
- take account of the different roles and character of different areas, promoting the vitality of our main urban areas, protecting the Green Belts around them, recognizing the intrinsic character and beauty of the countryside and supporting thriving rural communities within it;
- support the transition to a low carbon future in a changing climate, taking full account of flood risk and coastal change, and encourage the reuse of existing resources, including conversion of existing buildings, and encourage the use of renewable resources (for example, by the development of renewable energy);
- contribute to conserving and enhancing the natural environment and reducing pollution. Allocations of land for development should prefer land of lesser environmental value, where consistent with other policies in this Framework;
- encourage the effective use of land by reusing land that has been previously developed (brownfield land), provided that it is not of high environmental value;
- promote mixed use developments, and encourage multiple benefits from the use of land in urban and rural areas, recognizing that some open land can perform many functions (such as for wildlife, recreation, flood risk mitigation, carbon storage, or food production);
- conserve heritage assets in a manner appropriate to their significance, so that they can be enjoyed for their contribution to the quality of life of this and future generations;
- actively manage patterns of growth to make the fullest possible use of public transport, walking and cycling, and focus significant development in locations which are or can be made sustainable; and
- take account of and support local strategies to improve health, social and cultural wellbeing for all, and deliver sufficient community and cultural facilities and services to meet local needs.

2.7 This section demonstrates that the Appleby NP has regard to all the above.

2.8 The Appleby Parish Neighbourhood Plan ('the Plan') is designed to embrace these important core standards of sustainable development and the twelve core planning principles, in so far as they can be applied to the Parish of Appleby. The Plan is designed to be in general conformity with the policies of the Core Strategy, in so far as they can be applied to the Parish of Appleby.

2.9 The Appleby Parish Neighbourhood Plan contains Objectives and Policies. The Objectives are summarised in Table 1

Table 1: Neighbourhood Plan Objectives

A number of key objectives evolved from the consultation responses received and set out the principle priorities for future development.

Objective	
1	seek to ensure that any development is acceptable in planning terms with reference to design, scale, access, residential amenity, impact on visual amenity, drainage, ecology and all policies contained within this Neighbourhood Plan;
2	promote a high standard of design and scale which reflects the local character of the Parish of Appleby and incorporates high standards of energy efficiency and flexibility to meet the changing needs of present and future generations
3	support appropriate applications for infill development where it reflects the local character of the settlement in terms of scale and design and will contribute to enhancing the built environment of the Parish for instance to enable those wishing to ‘downsize’ but remain living within the Parish;
4	support rural exception affordable housing sites intended to meet identified affordable housing need in the rural area as identified by North Lincolnshire Council’s Strategic Housing Market Assessment;
5	Support the local economy by encouraging the conversion of existing redundant and other buildings to suitable business and sustainable employment.
6	promote social development by safeguarding and enhancing community facilities and open spaces to support health and wellbeing for everyone’s benefit and to sustain communities including promoting the provision of children’s play space at Santon;
7	support the relevant highway authority in securing highway improvements throughout the Parish
8	support measures to improve public transport, highway safety and to improve accessibility for non-vehicular users to access the countryside;
9	protect, conserve and enhance the character of the local built environment and the area’s heritage assets including the Conservation Area in Appleby village;
10	support measures to introduce a heritage trail throughout the Parish highlighting the wealth of historic cultural features
11	safeguard and enhance the countryside within the Parish and its distinctive landscape character as part of the Ancholme Valley. In the open countryside, outside of settlements and green infrastructure corridors, development will only be supported where it is essential for the purposes of agriculture, agricultural diversification and forestry; and
12	protect and enhance the network of habitats, watercourses and wildlife corridors that are important for biodiversity and geology and any other areas suitable to create an integrated network of natural habitats throughout the Parish

Table 2: Neighbourhood Plan Objectives, Policies and Conformity with the NPPF

Policy Number	Objective in the Plan	Policy Title	NPPF Paragraph Reference	NPPF Core Planning Principles	Neighbourhood Plan Policy Commentary
AP1	Objs 1, 2, 6.	Sustainable Development	14, 16	<ul style="list-style-type: none"> enhance and improve the places where people live drive sustainable development support the transition to a low-carbon future improve health, social and cultural wellbeing 	AP1 makes clear how the Neighbourhood Plan will promote the presumption in favour of sustainable development.
AP2	Objs 1, 2.	Design Principles	56, 57, 58, 59, 60, 61, 62, 63, 64, 65, 66.	<ul style="list-style-type: none"> enhance and improve the places where people live secure a high quality of design and a good standard of amenity conserve heritage assets 	AP2 emphasizes the importance of design and sets out design criteria which new housing development should meet.
Housing					
AP3	Objs 1, 2, 4, 9.	Housing Provision	49, 55, 56, 57.	<ul style="list-style-type: none"> enhance and improve the places where people live secure a high quality of design and a good standard of amenity help conserve and enhance the natural environment conserve heritage assets 	AP3 proposes that future housing development in the Parish should be in the form of small-scale incremental growth, conversions and infilling. It also sets out criteria which new development should meet
AP4	Objs 1, 2, 3, 9.	Infill Development	49, 55.	<ul style="list-style-type: none"> enhance and improve the places where people live secure a high quality of design and a good standard of amenity 	AP4 enables residents to infill in appropriate cases providing there is no adverse effect on the amenities of any adjoining residential premises and It would not affect the general quality and character of the area.

Policy Number	Objective in the Plan	Policy Title	NPPF Paragraph Reference	NPPF Core Planning Principles	Neighbourhood Plan Policy Commentary
AP5	Objs 1, 2, 4.	Rural Exception Sites for Local Need	54, 55.	<ul style="list-style-type: none"> enhance and improve the places where people live secure a high quality of design and a good standard of amenity encourage the re-use of land 	AP5 allows for the granting of planning permission for small sites comprising affordable housing to meet local needs as an exception to normal policies. Sets out the criteria against which such proposals will be evaluated and under what circumstances schemes for affordable housing may be permitted.
AP6	Objs 1, 2, 5.	Housing in the Countryside	55	<ul style="list-style-type: none"> enhance and improve the places where people live secure a high quality of design and a good standard of amenity help conserve and enhance the natural environment encourage the re-use of land 	AP6 requires that new isolated homes in the countryside should be avoided unless there are special circumstances. In appropriate cases this policy would facilitate the conversion of those that are of a sufficient size to provide reasonable living accommodation with only minor extensions.
The Rural Economy					
AP7	Objs 1, 2, 5.	Development of the rural economy	28	<ul style="list-style-type: none"> enhance and improve the places where people live secure a high quality of design and a good standard of amenity help conserve and enhance the natural environment encourage the re-use of land improve health, social and cultural wellbeing 	AP7 supports small-scale enterprises that can be accommodated primarily through the conversion of existing buildings within communities or on farmsteads.

Policy Number	Objective in the Plan	Policy Title	NPPF Paragraph Reference	NPPF Core Planning Principles	Neighbourhood Plan Policy Commentary
AP8	Objs 1, 2, 5.	Working from home	42	<ul style="list-style-type: none"> enhance and improve the places where people live drive sustainable development secure a high quality of design and a good standard of amenity protect the diversity of different areas help conserve and enhance the natural environment promote mixed use developments improve health, social and cultural wellbeing 	AP8 encourages people wanting to work wholly or partly from home in order to not only help to create a sustainable community but, by avoiding or at least reducing the need to commute to the workplace, will also have a positive environmental impact.
AP9	Objs 1, 2, 5.	Redevelopment of redundant buildings	28	<ul style="list-style-type: none"> enhance and improve the places where people live drive sustainable development secure a high quality of design and a good standard of amenity help conserve and enhance the natural environment encourage the re-use of land promote mixed use developments; conserve heritage assets 	AP9 encourages small-scale projects to convert redundant agricultural buildings may present opportunities to address shortages in key services provided that they do not adversely affect the Parish's rural setting.
AP10	Obj 5.	Improvement to communication Technology	42	<ul style="list-style-type: none"> enhance and improve the places where people live protect the diversity of different areas improve health, social and cultural wellbeing 	The purpose of the AP10 is to provide better digital connectivity for existing and new residents in the area.

Policy Number	Objective in the Plan	Policy Title	NPPF Paragraph Reference	NPPF Core Planning Principles	Neighbourhood Plan Policy Commentary
AP11	Obj 6.	Safeguarding and improvement of community facilities	28, 70, 73, 76.	<ul style="list-style-type: none"> enhance and improve the places where people live drive sustainable development improve health, social and cultural wellbeing 	AP11 seeks to retain existing community buildings and ensure the Local Green Space in the village is protected for future generations for its recreational value and visual amenity.
Traffic and Transport					
AP12	Objs 7, 8.	Improvements to the highway network	34, 35, 41.	<ul style="list-style-type: none"> enhance and improve the places where people live support the transition to a low-carbon future 	AP12 supports highways improvements through the delivery of new development within and surrounding the Parish.
AP13	Obj 8.	Improvement and extension of the public and permissive rights of way network	69, 73.	<ul style="list-style-type: none"> enhance and improve the places where people live support the transition to a low-carbon future help conserve and enhance the natural environment make full use of public transport, walking and cycling improve health, social and cultural wellbeing 	AP13 supports improvement and extension of the public and permissive network of bridleways, cycleways and footpaths.

Policy Number	Objective in the Plan	Policy Title	NPPF Paragraph Reference	NPPF Core Planning Principles	Neighbourhood Plan Policy Commentary
Natural Environment					
AP14	Objs 11, 12.	Natural Environment	75, 109.	<ul style="list-style-type: none"> enhance and improve the places where people live protect the diversity of different areas help conserve and enhance the natural environment improve health, social and cultural wellbeing 	AP14 seeks to protect, manage and enhance the Parish's natural environment taking account of the intrinsic character and beauty of the countryside, whilst supporting thriving communities within it.
Heritage Assets					
AP15	Objs 1, 2, 10.	Protection and enhancement of Appleby Conservation Area	60, 61, 62, 63, 64, 65, 66, 126, 127, 131, 132, 141.	<ul style="list-style-type: none"> enhance and improve the places where people live secure a high quality of design and a good standard of amenity conserve heritage assets improve health, social and cultural wellbeing 	AP15 seeks to conserve heritage assets so that they can be enjoyed for their contribution to the quality of life of this and future generations.

Contribute to the Achievement of Sustainable Development

- 2.10 The NPPF has a presumption in favour of sustainable development. According to the NPPF, Sustainable means ensuring that better life for local residents and making the quality of life better for future generations. The Appleby Neighbourhood plan echoes that of the NPPF and encourages positive sustainable growth in the village which will ensure economic, environmental and social progression for future generations.
- 2.11 The Appleby Plan has been prepared with a central understanding that the key areas it addresses, namely the environment, economy and the community are all closely linked. The policies, therefore, aim to facilitate change within the community whilst protecting what is highly valued.
- 2.12 Table 3 below categorises the impact of the Plan’s policies; each policy has been reviewed and assessed against the three dimensions of sustainability, with the impact of the policy categorised as follows:

Impact of each policy:

- ++ very positive
- + positive
- o neutral
- x negative
- xx very negative

Table 3: How Neighbourhood Plan Policies Contribute to the Achievement of Sustainable Development

Policy Number	Policy Title	Social	Econ.	Env.	Commentary
AP1	Sustainable Development	++	++	++	Makes clear how the Neighbourhood Plan will promote the presumption in favour of sustainable development.
AP2	Design Principles	++	+	++	Emphasises the importance of design and sets out design criteria which new housing development should meet.
AP3	Housing Provision	++	+	+	Proposes that future housing development in the Parish should be in the form of small-scale incremental growth, conversions and infilling. It also sets out criteria which new development should meet

Policy Number	Policy Title	Social	Econ.	Env.	Commentary
AP4	Infill Development	++	+	+	Enables residents to infill in appropriate cases providing there is no adverse effect on the amenities of any adjoining residential premises and It would not affect the general quality and character of the area.
AP5	Rural Exception Sites for Local Need	++	++	+	Allows for the granting of planning permission for small sites comprising affordable housing to meet local needs as an exception to normal policies. Sets out the criteria against which such proposals will be evaluated and under what circumstances schemes for affordable housing may be permitted.
AP6	Housing in the Countryside	+	+	+	New isolated homes in the countryside should be avoided unless there are special circumstances. In appropriate cases this policy would facilitate the conversion of those that are of a sufficient size to provide reasonable living accommodation with only minor extensions.
AP7	Development of the rural economy	++	++	++	Supports small-scale enterprises that can be accommodated primarily through the conversion of existing buildings within communities or on farmsteads.
AP8	Working from home	++	++	++	Encouraging people wanting to work wholly or partly from home will not only help to create a sustainable community but, by avoiding or at least reducing the need to commute to the workplace, will also have a positive environmental impact.

Policy Number	Policy Title	Social	Econ.	Env.	Commentary
AP9	Redevelopment of redundant buildings	++	++	++	Small-scale projects to convert redundant agricultural buildings may present opportunities to address shortages in key services provided that they did not adversely affect the Parish's rural setting.
AP10	Improvement to communication Technology	++	++	++	The purpose of the policy is to provide better digital connectivity for existing and new residents in the area.
AP11	Safeguarding and improvement of community facilities	++	0	++	Seeks to retain existing community buildings and ensure the Local Green Space in the Village is protected for future generations for its recreational value and visual amenity.
AP12	Improvements to the highway network	+	+	0	Supports highways improvements through the delivery of new development within and surrounding the Parish.
AP13	Improvement and extension of the public and permissive rights of way network	++	+	+	Supports improvement and extension of the public and permissive network of bridleways, cycleways and footpaths.
AP14	Natural Environment	+	+	++	Seeks to protect, manage and enhance the Parish's natural environment taking account of the intrinsic character and beauty of the countryside, whilst supporting thriving communities within it.
AP15	Protection and enhancement of Appleby Conservation Area	++	0	++	Seeks to conserve heritage assets so that they can be enjoyed for their contribution to the quality of life of this and future generations.

General Conformity with Strategic Local Policy

- 2.13 The Appleby NP has been prepared with planning officers from North Lincolnshire Council under their duty to assist qualifying bodies when preparing neighbourhood plans. This has ensured that the process of developing policies for the plan has been scrutinised in terms of conformity with strategic policies; it is necessary to assess the Appleby NP against these documents.
- 2.14 North Lincolnshire Council is currently preparing a new, single Local Plan. When it is adopted it will replace the current North Lincolnshire Local Plan, and the Core Strategy and Housing and Employment Land Allocations Development Plan Documents. However, as it is still in the early stages of preparation (having just completed their initial issues and options consultation) limited weight can be afforded to it at this stage as no policies have as yet been formulated and published for comment. Once this document has progressed through the plan making process and has been independently examined and adopted, it may be necessary to conduct a review of the NP to ensure that it is in general conformity with the policies of that Local Plan.
- 2.15 This neighbourhood plan supports the current position of Appleby in the Core Strategy Settlement Hierarchy where it is defined as a Rural Settlement. Policy CS3: Development Limits explains that limits will be applied to the Scunthorpe urban area, the Market Towns and Rural Settlements. Development limits are used to identify the areas within which development may be appropriate, including infilling, but they do not necessarily cover all existing developed areas. Table 4 below shows how the Appleby NP is in general conformity with the strategic policies of the North Lincolnshire Council Local Plan 2003 (Saved Policies), the North Lincolnshire Core strategy 2011, and Housing & Employment Allocations Document 2016.
- 2.16 Table 4 below shows how the Appleby NP is in general conformity with the strategic policies of the North Lincolnshire Council Local Plan 2003 (Saved Policies) and the North Lincolnshire Core strategy 2011.

Table 4. General Conformity with Strategic Local Policy

Policy Number	Policy Title	North Lincolnshire Policies
AP1	Sustainable Development	National Planning Policy Framework Paragraphs 6-16, North Lincolnshire Core Strategy Policy CS2 and Housing & Employment Land Allocations Development Plan Document Policy PS1
AP2	Design Principles	North Lincolnshire Core Strategy policies CS1, CS2, CS5 and CS8; and North Lincolnshire Local Plan policies H5 (except criteria i and ii), H7, H8, HE2, HE5 and DS1
AP3	Housing Provision	North Lincolnshire Core Strategy policies CS1, CS2, CS3, CS7 and CS8; and North Lincolnshire Local Plan policies H5 (except criteria i and ii), H7, H8, HE2, HE5 and DS1
AP4	Infill Development	North Lincolnshire Core Strategy policies CS1, CS2, CS3, CS7 & CS8, along with North Lincolnshire Local Plan policies H2, H5 (except criteria I & ii), H7, H8, HE2, HE5 and DS1

Policy Number	Policy Title	North Lincolnshire Policies
AP5	Rural Exception Sites For Local Needs	North Lincolnshire Core Strategy policy CS3 and CS9; and North Lincolnshire Local Plan policy HE5
AP6	Housing In The Countryside	North Lincolnshire Core Strategy policies CS1, CS2, CS3, CS7 and CS8; and North Lincolnshire Local Plan policies H5 (except criteria i and ii), H8, RD2 and DS1
AP7	Development Of The Rural Economy	North Lincolnshire Local Plan policies RD2, RD3, RD5, RD6, RD7, RD8, RD9, RD14, T19, HE2, HE5 and DS1.
AP8	Working From Home	North Lincolnshire Core Strategy policy CS2; and North Lincolnshire Local Plan policies HE2 and HE5
AP9	Redevelopment Of Redundant Buildings In The Open Countryside	North Lincolnshire Core Strategy policy CS15; and North Lincolnshire Local Plan policies RD5, RD6, RD7, RD8 and DS1
AP10	Improvements To Communication Technology	North Lincolnshire Local Plan policies DS1, DS19 and DS20
AP11	Safeguarding & Improvement of Community Facilities	North Lincolnshire Core Strategy policies CS15 and CS27; and North Lincolnshire Local Plan policies R1, R2, R3, C2, C5, C7, LC11 and HE2
AP12	Improvements To The Highway Network	North Lincolnshire Local Plan policies T14, T15, T18 and HE2
AP13	Improvement & Extension Of The Public & Permissive Rights Of Way Network	North Lincolnshire Core Strategy policy CS27 and North Lincolnshire Local Plan policies R5 and DS1
AP14	Natural Environment	North Lincolnshire Local Plan policies LC1, LC2, LC4, LC5, LC6, LC7, LC11 and LC12
AP15	Protection & Enhancement Of The Appleby Conservation Area	North Lincolnshire Core Strategy policy CS6; and North Lincolnshire local Plan policies HE2 and HE4

Be Compatible with EU Obligations

2.17 A Strategic Environmental Assessment (SEA) is required under European legislation for all

plans that may have a **significant** effect on the environment. This particularly relates to plans that designate sites for development such as a Local Plan or Neighbourhood Plans produced by a town or parish council.

2.18 The result of the Strategic Environmental Assessment Screening Report is that an Environmental Report covering the requirements of the SEA Directive is required to accompany the Appleby Parish Neighbourhood Plan, the reasons being:

- Significant environmental effects with regards to impacts on the Risby Warren SSSI and Broughton Wood SSSI cannot be ruled out; and
- To provide evidence and justification that the Appleby Parish Neighbourhood Plan has been prepared with sustainability at the forefront of its preparation, a key consideration in the National Planning Policy Framework.

2.19 The Screening Report also concluded that the Plan is not likely to result in significant impacts on Natura 2000 sites and, therefore, an Appropriate Assessment is not required.

2.20 A Strategic Environmental Assessment Scoping Report has been published by Appleby Parish Council under EU Directive 2001/42 on Strategic Environmental Assessment and the Environmental Assessment of Plans & Programs Regulations 2004 to accompany the publication of the Pre-Submission version of the Appleby Parish Neighbourhood Plan. The Scoping Report was consulted on at the same time as the Pre-Submission draft. The results of this consultation with the Statutory Consultees will help to inform any amendments to that version of the Neighbourhood Plan prior to its submission to North Lincolnshire Council to enable the local authority to undertake the 6-week Submission Draft Regulation 16 consultation. The three consultation bodies as required by the SEA regulations are as follows:

- 1 Natural England;
- 2 English Heritage; and
- 3 Environment Agency.

2.21 The aim of the consultation process is to involve and engage with statutory consultees and other relevant bodies on the scope of the appraisal. In particular, it seeks to:

- Ensure the SEA is both comprehensive and sufficiently robust to support the Neighbourhood Development Plan during the later stages of full public consultation;
- Seek advice on the completeness of the plan review and gain further information, where appropriate;
- Seek advice on the suitability of key sustainability issues; and
- Seek advice on the suitability of options and alternatives.

2.22 The conclusion of the Scoping Report is that the benefits of implementing the policies within the plan will far outweigh the effect of not having a Neighbourhood Plan for Appleby Parish.

2.23 The NP has regard to the fundamental rights and a freedom guaranteed under the European Convention on Human Rights and complies with the Human Rights Act.

Conclusion

2.24 It is the view of Appleby Parish Council that the Appleby Parish NP meets the Basic Conditions as set out in Schedule 4B to the TCPA1990 Act.

- 2.25 The Plan has appropriate regard to the NPPF, will contribute to the achievement of sustainable development, is in conformity with strategic policies contained in (the saved policies within) the North Lincolnshire Local Plan and Core Strategy, and meets relevant EU obligations.
- 2.26 The Plan has been prepared to address key planning issues in the Plan area. As the Neighbourhood Plan must be in general conformity with national and local strategic policies it does not seek to repeat them.

3 APPENDIX I

North Lincolnshire Local Plan Policies

Chapter 1 - Strategy:

Strategy Policy Reference	Policy
Policy ST2	Settlement Hierarchy
Policy ST3	Development Limits

Chapter 2 - Population and Housing:

Housing and Population Policy Reference	Policy
Policy H1	Housing Development Hierarchy
Policy H2	Proposed Housing Sites
Policy H3	Previously Used Land
Policy H5 (except criteria i and ii)	New Housing Development
Policy H7	Backland and Tandem Development
Policy H8	Housing Design and Housing Mix
Policy H9	Housing Density
Policy H13	Exception Affordable Housing in Medium Growth Settlements and Minimum Growth Settlements
Policy H16	Nursing and Rest Homes

Chapter 4 - Rural Development:

Rural Development Policy Reference	Policy
Policy RD2	Development in the Open Countryside
Policy RD3	Industrial and Commercial Development in Minimum and Medium Growth Settlements
Policy RD5	Alternative uses of Industrial and Commercial Sites in the open countryside
Policy RD6	Re-use and/or Adaption of Rural Buildings for Industrial and Commercial uses in the Open Countryside
Policy RD7	Agriculture, Forestry and Farm Diversification
Policy RD8	Farm Shops and Sales from Agricultural and Forestry Holdings
Policy RD9	Re-use and/or Adaptation of Rural Buildings for Residential Use in the Open Countryside
Policy RD14	Agricultural and Forestry Buildings

Chapter 7 - Transportation:

Transportation Policy Reference	Policy
Policy T14	The North Lincolnshire Strategic Road Network (NLSRN)
Policy T15	Highway Improvements and New Highway Construction
Policy T18	Traffic Management
Policy T19	Car Parking Provision and Standards

Chapter 8 - Leisure and Recreation:

Leisure and Recreation Policy Reference	Policy
Policy R1	Protecting Playing Fields
Policy R2	Protecting Areas of Local Importance for Children's Play

Policy R3	Built Sports Facilities
Policy R5	Recreational Paths Network

Chapter 9 - Community Facilities:

Community Facilities Policy Reference	Policy
Policy C2	Community Facilities in Minimum Growth Settlements and Rural Hamlets and Villages in the Open Countryside
Policy C4	Children's Day Care Provision
Policy C5	Churches, Prayer Houses and Other Places of Worship
Policy C7	Community Centres

Chapter 10 – Landscape and Conservation:

Landscape and Conservation Policy Reference	Policy
Policy LC1	Special Protection Areas, Special Areas of Conservation and Ramsar Sites
Policy LC2	Sites of Special Scientific Interest and National Nature Reserves
Policy LC4	Development Affecting Sites of Local Nature Conservation Importance
Policy LC5	Species Protection
Policy LC6	Habitat Creation
Policy LC7	Landscape Protection
Policy LC11	Areas of Amenity Importance
Policy LC12	Protection of Trees, Woodland and Hedgerows

Chapter 11 – The Ironstone Gulleys:

The Ironstone Gulleys Policy Reference	Policy
Policy IG9	Ironstone Extraction

Chapter 12 – The Historic Environment:

Historic Environment Policy Reference	Policy
Policy HE2	Development in Conservation Areas
Policy HE3	Demolition in Conservation Areas
Policy HE4	Shopfronts, Advertisements, Canopies and Blinds in Conservation Areas
Policy HE5	Development affecting Listed Buildings
Policy HE6	Demolition of Listed Buildings
Policy HE7	Advertisements and Listed Buildings

Chapter 15 - Development Standards:

Development Standards Policy Reference	Policy
Policy DS1	General Requirements
Policy DS19	Telecommunications Equipment
Policy DS20	Telecommunications Apparatus on Domestic Dwellings

4 APPENDIX 2

Core Strategy Policies

Core Strategy Policy Reference	Policy
Policy CS1	Spatial Strategy For North Lincolnshire
Policy CS2	Delivering More Sustainable Development
Policy CS3	Development Limits
Policy CS5	Delivering Quality Design In North Lincolnshire
Policy CS6	Historic Environment
Policy CS7	Overall Housing Provision
Policy CS8	Spatial Distribution Of Housing Sites



www.applebypc.org.uk