

# YOUR COMMUNITY NEWSLETTER

Seasonal updates and information for the residents of Appleby, Santon & Clapp Gate



## Eyes Down for a Full House?

Would you like to see the monthly bingo sessions restart at the village hall?

If it's for you Di Midwinter would like to hear from you as she is willing, subject to numbers, to take over the running of the sessions from Elizabeth Hebblewhite and Anne Harrison who have stood down from the role.

If you would like to join in the fun on a regular basis please let Di know by either contacting her by email [dimidw@aol.com](mailto:dimidw@aol.com) or by phone 01724 733602 or when Di posts the details on the residents page make sure you comment you would like to come

## New independent living team

A new NLC service to help people live independently by using the latest technology and equipment is being launched in North Lincolnshire.

Most people want to remain independent and active in their communities as long as possible using self practical care and prevention solutions.

Technology to help with this has come on in leaps and bounds in the last few years and costs have plummeted.

Using smart devices, people can control many aspects of their homes as well as contact friends or family in an emergency.

For example, the service called Independent Living is working with a local company Upstream on a solution with a working titled of Bridgit Care designed with carers in mind.

It includes a home monitor hub and a watch that collects information about a loved one and their home and can transmit alerts – providing peace of mind.

The new Independent Living service can help people make the most of this new technology and also provide advice and support on a wide range of equipment that can make living easier, such as bath seats, shower chairs and dressing aids.

The service aims to be responsive to developing needs, not reactive in crisis.

The Independent Living service is also about enriching people's lives with advice on connecting to communities and linking in with the many support services and voluntary groups that are available Anyone looking for support should call 0724 297000 and ask for the Independent Living.

## Parish Council Keeping You Informed

Councillor Ivor Keyes ~ Chairman Appleby Parish Council

### The Best Kept Village

judging has been completed and Appleby was Highly Commended in the medium Village Category, well done to all. The full details are to be found on the home page of the Parish Council website at [www.applebypc.org.uk](http://www.applebypc.org.uk) The scoring is always very tight and there are just a few points between each village.

	Score	Position	Specific category
Medium Village Group (pop. 500 to 2000)			
Worlaby	196	1 <sup>st</sup>	
Barnetby-le-Wold	193	2 <sup>nd</sup> =	
South Ferriby	193	2 <sup>nd</sup> =	Best Imaginative Planting Best Community Planting
North Thoresby	192		Best New Entrant
Appleby Parish	192	Highly commended	
Wrawby	192	Highly commended	
West Butterwick	190		Best Kept Playground
Owston Ferry	188		
Ulceby	186		

A special mention was made of all the hedges within the village and to be sure there was a brilliant effort by residents. The judges from the Campaign for the Protection of Rural England also picked out three hedges for prizes, First being No11 School Lane, Second was number 9A School Lane and third was number 9 School Lane, congratulations to those owners who were awarded a prize card and a voucher to be redeemed at Linden Nurseries from PC. It would be a difficult choice to make as there were so many well maintained hedges and the result could have been different on another day. Thanks should also be given to those residents that maintained the Planters throughout the Parish during what has been a topsy - turvy summer weather wise.

A number of gardens/flower arrangements throughout the village were mentioned and for the first time High Santon Villas were included in the judging, three properties there being singled out for favourable comment as well. The judges full comments and mark sheet can be viewed on the PC website link [http://www.applebypc.org.uk/\\_UserFiles/Files/2021%20Appleby%20BKV%20results.pdf](http://www.applebypc.org.uk/_UserFiles/Files/2021%20Appleby%20BKV%20results.pdf) . The Churchyard and War memorial also came in for praise, and we have to thank the volunteers who maintain them throughout the year.

On the subject of the Church yard an initiative has been put forward to adopt a grave for maintenance, those being the older graves with no family. Terry and Maureen Beisty look after the grass cutting throughout the year among other things, but if anyone would like to adopt a grave could they contact Terry at 01724735595.

**A new Councillor** was co-opted at the July meeting that being Francesca Marritt who lives at High Santon Villas, her contact details are 07870 171708, e-mail [franmarritt@pc@mail.com](mailto:franmarritt@pc@mail.com) and it's good to have a Councillor from the Santon area, as much of Council business is in respect of Santon.

**Playing Field Equipment** We have received tenders for replacement for some of the equipment in the children's playground which we hope to progress sooner rather than later by way of a grant from North Lincolnshire Council. We couldn't possibly afford to replace equipment with our own funds alone, having such a small precept. As with many things PC wise, it is a slow process, but we get there in the end.

**Vacancy** Kerry McGrath has stood down as Parish Clerk due to heavier workloads elsewhere , being promoted at Brigg Town Council and Winterton Town Council. An advert is included elsewhere in this Newsletter as well as on the website of East Riding and Northern Lincolnshire Local Councils Association (ERNLLCA) our advisory body. I'd like to publicly thank Kerry here for the work she has been involved with during her term of office. Kerry has always made herself available, sometimes at short notice.

**Dog fouling** continues to be an issue, not just in Appleby village , but elsewhere in the Parish and the Ward. Reports of dog fouling can be made to North Lincs Council by calling 01724 297000 or directly on their website [www.northlincs.gov.uk](http://www.northlincs.gov.uk) . Fouling can be cleaned up from hard surfaces by NLC. The Parish is quite popular due to its quiet roads etc. and we have many visitors..



## St Bartholomew's

Revd Alice Nunn

At the moment St Bartholomew's is still closed on Sundays, however I am pleased to say that we are able to hold Weddings, Baptisms and Funerals here.

At the time of writing we are having regular Sunday services at Winterton at 10.45, but we are hoping to open the village churches very soon. We are considering how best to do it and will of course ensure that Covid precautions are in place.

Looking further ahead I hope we will be able to host a carol service for the village nearer to Christmas.

In the meantime keep an eye out for any changes on local Facebook or the Parish Magazine as we look forward to welcoming you back to YOUR church.

Please feel free to contact me if you have ideas or concerns. (01724 732262)

## A Big Thank You

From the Friends of Appleby Parish

In the last community newsletter we asked residents of the parish if they were able to contribute to keep the church open. We have had about 15 families who are now supporting the church. Also we have had had a couple of large one off donations and the rest are monthly giving. A big thank you to all those who have helped

So far we have raised £2k with £180 a month of donations which will provide us with a regular income of just over £2k p.a. This is a great effort though to ensure the church is safe from closure it would be good if we can double the regular giving.

If you are interested in supporting the church and have not yet done so contact us at [friendsofapplebyparish@gmail.com](mailto:friendsofapplebyparish@gmail.com) or through our Facebook page which you can access through the village Facebook.

We have had a baptism over the last month and will be having two more late September to early October.

It is great to see the church partially open again even in a limited manner. We are hoping to open the church for an hour or two a week soon for private prayer and meditation.

## Around the station area

Appleby crossing NLC Highways is arranging to meet with NetworkRail to discuss the issues of flooding. More on this when a meeting is arranged and a discussion held

Appleby to Appleby station path as well as speed reduction scheme both schemes are scheduled for an October start.

Appleby Signal Box this Grade II listed building is in need of repair and repainting. The box is owned by NetworkRail with whom a discussion is to be had to see how a scheme of work can be put into place. More on that in a later newsletter though it has to be mentioned there is no legal obligation requiring the owners of listed buildings to maintain their property in a good state of repair.



## Village Hall

Craig Johnsen ~ Chairman

Appleby Village Hall Management Committee

So we're back in earnest now at the village hall, but we remain cautious as we keep the doors open for all.

Our event schedule is now jam packed all the way up to Christmas, and we've had some great events already! We had a great turn out to our July event, a pub night with music from James and Major. This popular, world-class duo brought a unique and diverse repertoire with mandolin show-stoppers and some of their own notorious comic songs getting everyone of all ages singing along. This event was brought to us by Blaize rural touring events the community arts organisation. They continue to help bring great acts to village halls like ours across the country.



As we try to stick to our commitment of 'one event a month' we need your continued feedback and support, so do let us know your thoughts and any ideas or if you just want to support future events or the committee in general. We really do need your help in whatever way you can.

Unfortunately we couldn't hold our a race night as planned in August due to resourcing challenges but we are coming back strong. Next up is the triumphant return of **Perfect2**,

**18th September 7pm**, the awesome beautiful south tribute act, this will also be a pub night. It's sure to be popular so secure your tickets early. We also hope to have Pie-O-Neers on site too selling their amazing pies, open to all even if not attending this event. After this we have the Moggies (Pub Night & Live Music) in October, Rob Gee (Comedy Play) in November and then hopefully some Christmas events before hopefully ending the year with a New Years party.



It is with regret that we've had to make the difficult decision to cancel any plans for a Fayre Day this year, due to the challenges brought by the current COVID position. However, we do plan to come back stronger next year. We apologise for this disappointment but I hope that you agree that this is the right decision for the village.

In terms of hire of the hall, we've kept hire prices the same and aim to tailor the package to work around everyone's unique needs. If you want to hire the hall just give myself or a member of the committee a shout or email on [applebyvillagehall@gmail.com](mailto:applebyvillagehall@gmail.com).

I think that's all for now but one last plea as always... if you're interested in supporting the community and keeping the hall doors open, do let me know if you want to join the committee. Keeping the hall open takes time and commitment, and with our low numbers this is becoming a tougher task. I unfortunately will also be stepping down as chairman at the end of this financial year (November) at our AGM due to my own personal challenges, but still hope to help the committee in anyway I can.

So finally I'd like to thank you all for your support again, to the rest of the committee, trustees for their support of myself and to everything we do together. Lets' keep positive for the rest of the year ahead, stay safe and well, and I personally cannot wait to see you all again soon!

## 100 Club Jenny Hook - Organiser

The following are the recent ticket numbers and winners

June			July			August		
£50	10	Lois Hargrave	£50	90	James Szabo	£50	51	Ken Pritchard
£20	20	Ros Worsley	£20	32	Duncan Smith	£20	62	Wendy Marshall
£10	41	Gus Smith	£10	99	Rebecca Chambers	£10	83	Jamara Hignett

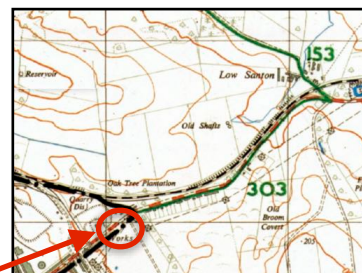
## Santon Update

Parish Council and NLC Ward Councillors continue to have discussions with both British Steel and North Lincolnshire Council regarding flooding issues as well as other things, and we have a further meeting at the end of September.

"Grips" in the verges on Santon Lane should have been completed by the time this Newsletter has been distributed, which will reduce the risk of flooding on that road.

Extra flowers were planted along High Santon Villas, hopefully residents will help with maintaining

Discussions continue with the land owners regarding some kind of gating being positioned in the vicinity of circled on the map on the Public Right of Way (303)





## Planning Information

Parish Council often receives questions about what alterations residents can make to their homes and perhaps the following might be helpful.

Below is a link to the Planning Portal that refers to Planning Regulations. It was first included in a Newsletter article some years ago and as we have newer residents who may not have had access to this information it's probably a good time to include the link again.

<https://interactive.planningportal.co.uk>

There are references to certain requirements for Conservation Areas, which apply to much of the Parish, but can also be useful to those areas of the Parish that are not within the Conservation Area.

Appleby Village has 21 Listed buildings and 51 Buildings of Townscape Merit, within the Conservation Area, and there are also some further "heritage" buildings. Consequently the character of Appleby is very much determined by those buildings. There are also 5 Listed buildings outside of the Village itself.



Appleby Parish also has a Neighbourhood Plan, as yet the only such document in North Lincolnshire. Neighbourhood Plans are a feature of very many areas elsewhere in the country, the purpose of which is to allow residents to have an input to any development in their area via the Planning Process. Consultations via surveys, open days and presentations were carried out by a group of residents over some three and half years to determine what residents priorities were regarding development, from which draft policies were created by a Planning Consultant. The draft was then put to all residents and any suggested amendments made, followed by a further assessment by an Independent Planning Inspector to verify the legality of the document before going to referendum to which some 90% of voters agreed.

Appleby Parish Council acquired funding on behalf of the residents group for the plan by way of grants from a central government department. The Independent Planning inspector was paid for by North Lincolnshire Council, which also gave support by assigning a Planning Officer to help the resident group through the process, as well as approving the finished Plan thereby making it a legal document. This was no small effort for a Parish of our size. A huge amount of work went into the development of the Plan by the resident group, and importantly there was also a huge amount of work carried out by those residents that participated in the consultation.

The Parish Neighbourhood Plan is effectively a mandate that Appleby Parish Council uses when commenting on any Planning Application submitted for the Parish and which Planners must take into consideration when making their Planning decisions. Details of the Plan and associated information can be found on the Parish Council website, where a list of Buildings of Townscape Merit and Listed Buildings can be found.

[http://www.applebypc.org.uk/Neighbourhood\\_Plan\\_25388.aspx](http://www.applebypc.org.uk/Neighbourhood_Plan_25388.aspx)

It may well be useful to contact North Lincs Council Planning department before deciding on any upgrades or development for clarification

## Vacancy for a Parish Clerk Appleby Parish Council

Appleby Parish Council is seeking a Clerk/Responsible Financial Officer ((RFO) to work 16 hours per month which will include 2 hours attending the monthly Parish Council meeting.

The successful applicant will be qualified to ILCA level, but preferably CiLCA qualified, or working towards, with the salary LC1 range in scale 7-12, dependent on experience and qualification, as set out in the 2004 National Agreement on Salaries and Conditions of Service of Local Council Clerks in England and Wales.

Duties to include managing both the Council's administration and the services it provides to the Parish of Appleby, which includes Santon, Clapp Gate, Station area as well as the Village of Appleby and efficiently fulfilling the statutory role of Responsible Financial Officer.

The Clerk / RFO will work from home, as well as attend Parish Council meetings in the Village Hall in Appleby and attend meetings elsewhere as required, so a driver's licence and car is desirable.

For more information, job description and application form please contact Ivor Keyes, Chair of Appleby Parish Council, [ivorkeyesapc@woodside16.plus.com](mailto:ivorkeyesapc@woodside16.plus.com) or 07752 144970

**Closing date for application 8th October 2021**

## Pipeline project information

Some residents have been receiving information about a survey to be undertaken in certain parts of the parish, the background to which is as follows:

National Grid Ventures (part of National Grid Group) has approached officers in Economic Growth at North Lincolnshire Council regarding their proposals to bring forward plans to enable a major new network of pipelines in the Humber region to support the UK's transition to a low carbon economy.

The Humber Low Carbon Pipelines project includes a number of different elements that will enable the transportation of hydrogen and carbon dioxide. Briefly, the project comprises:

- Onshore underground pipelines, transporting carbon dioxide and hydrogen separately;
- Above Ground Installations (AGIs) at certain points along the route; inclusive of Block Valves, to maintain pressure, PIG Traps for maintenance purposes and a Compressor Station at the coast, where the carbon dioxide will be transported offshore to a saline aquifer store;
- Connection points to the emitters in the region;
- A tunnel crossing the River Humber.

The proposal is for one of these underground pipelines to run south of the Humber through North Lincolnshire. Broadly speaking, the proposed pipelines would follow a route from Drax, heading in a south easterly direction past Scunthorpe and then in a north easterly direction, crossing the Humber near Immingham, then on to Saltend and a landfill point on the Holderness Coast.

The construction of pipelines is classed as Nationally Significant Infrastructure Projects and as such must follow the consenting process set out in the Planning Act 2008 and will not be determined by North Lincolnshire Council.

The Planning Act requires prospective applicants to consult with the public and other groups and have regard to their feedback ahead of submitting an application for development consent. The letter that has been sent out is the first stage of non-statutory consultation on the potential route corridors for the project. There will be a second consultation in 2022 which is the statutory consultation on detail project route proposals.

Together these consultations will give communities and stakeholders the opportunity to comments on the potential route corridors from an early stage in their development and influence how they are developed.

Following these consultation stages the applicant will apply for a development consent order (DCO) to the Planning Inspectorate, the government agency responsible for operating the planning process for NSIP (Nationally Significant Infrastructure Projects) proposals.

It has to be stressed that this is a consultation and if any resident has any concerns please contact the Economic Growth Team on email: [businessinfo@northlincs.gov.uk](mailto:businessinfo@northlincs.gov.uk) or phone 01724 297330 t

## Appleby Fayre 2022

Robin Richbell

### Organiser Appleby Country Fayre

Although we have missed a couple of years, we will be planning Appleby Fair Day for Fathers Day. **19 June 2022**

Please help as we will be looking at any ideas you have to develop our plans. We need know what you would like to see displays on an arena stage and stalls traders. We plan to make this a Country Fair with local traders displaying and selling their wares.

We normally trade on this day 11am till 5pm. Do you think opening earlier would be good 10am or 10.30am maybe till 4pm or 4.30pm.

Do you want a BBQ or local traders with food providers. We have had interest from Hog Roast and Pizza providers. We will try to deliver Bacon Rolls from the Village Hall. In previous years have had the WI helping in this area we now need our local community to to step up and help us throughout the day,

## Neighbourhood Watch



### Your contacts

In an Emergency or crimes in progress always call 999

None Emergency calls, to report a crime or to report suspicious activities use 101 or details can be made via Humberside Police website: [www.humberside.police.uk](http://www.humberside.police.uk)

### Neighbourhood Watch Coordinator

Appleby Parish Neighbourhood Watch Coordinator Roger Fernando contact details

e-mail: [crf-csd@outlook.com](mailto:crf-csd@outlook.com)

Tel: 01724 735273

### Neighbourhood Police Team:

PCSO Tracey Dyas

[Tracy.Dyas@humberside.pnn.police.uk](mailto:Tracy.Dyas@humberside.pnn.police.uk)

Tel: 07464 649916

The contact details for Tracey should not be used for reporting crimes or incidents, instead use the 101 or 999 service

**My Community Alerts**, is a Police updating service which will keep you informed of recent scams etc, to set up this facility visit

<https://www.humberside.police.uk>

then follow the links to /My Community Alert,



### Safer Neighbourhoods

Contact Sandra Joyce

Tel 01724 297434

Mob 07557566213

Email: [sandra.joyce@northlincs.gov.uk](mailto:sandra.joyce@northlincs.gov.uk)

Compiled and distributed on behalf of and for

Appleby Parish Council

A digital copy of this newsletter is on the Parish Council's web site

[www.applebypc.org.uk](http://www.applebypc.org.uk)

Also on Appleby Website hosted by

[www.appleby-lincs.co.uk](http://www.appleby-lincs.co.uk)

Winter edition out on 10 December

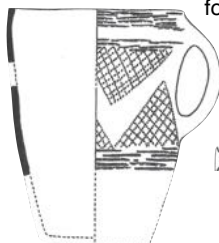
## Continuing with the rich history of the parish .....

Kate Yolland

The discovery of the archaeological site, within the proposed "chicken farm" area, has shed an important new light on the village of Appleby as it was in prehistoric times. Planning documents and a historical survey suggest that Appleby was larger than expected, especially because later, the Roman Road- Ermine Street encouraged development along its length. Neolithic people and the early Roman invader possibly lived and developed side by side. As a result Appleby appears to have extended further north along Ermine Street at that time.

From the HER (Historical Environment Records) data three early prehistoric "spotfinds" were found on the proposed site. A flint scatter dating to the Neolithic period, an arrowhead dating to the late Neolithic period together with a number of other worked flints. There is also evidence of crop marks and a single spot find of a "terret" ring, a rein ring used for attachment of yoke or horse harness. Various other finds include pottery dating from prehistory to third century A.D. In addition on the site was the discovery of postholes for buildings and other finds on the "chicken farm site" indicate that this area was once one of high intensity activity, possibly a roadside settlement or industrial area or both.

A hoard of bronzes dating from the Middle Bronze Age was found in a local field in 1884 and it is possible that the spearhead found, as part of the hoard, was one of the earliest of its kind found in Britain. A socketed axehead was also found dating from the late Bronze Age and early Iron Age coins were found on the proposed site.



Remains of beaker pottery from pits at beaker occupation Risby Warren

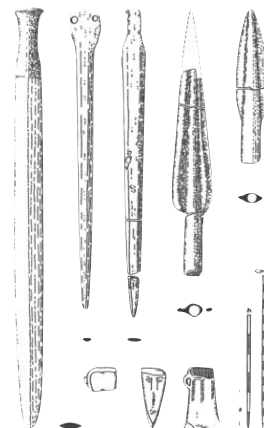
Bronze Age pottery (Beaker people), horse scrapers, end scrapers, knives, arrow and lance heads have also been discovered- these were famous for the beauty of their finish. Also found in the immediate area were rare polished stone celts or axes. Hand-axes from Risby Warren have even been found on monastery sites in France. Finds early metalwork are few in this country and so could be highly valued.

At one time there were three "barrows", (burial places) perhaps more, in Appleby but over time have been flattened and ploughed under. There were three barrows opposite Thorneholme but these are now flattened.

Risby Warren, important for its "Pigmy" flints, (triangular, pointed, and rhomboidal formed flint) was known locally as the Camp because an archaeological dig discovered evidence of human habitation.

Before the Romans, there was an ancient trackway from Appleby westward passing Risby Warren, thought to have been connected to "Frodingham Causeway" which led to Trentside. River traffic on both the Ancholme and the Trent were important at this time.

The "Appleby Boat" is a must see at Scunthorpe Museum. but more about that and the Roman era in the next edition.



Middle-Late Bronze Age bronze implements from Appleby hoard (held at Nostell Priory)



Hand-axe from Risby Warren

### Dates for your diary

#### Village Hall

#### Parish Council Meeting

Now resumed as normal meetings meetings in the village hall.

Tuesday 21 September 7:00pm - 9:00pm

Tuesday 19 October 7:00 - 9:00pm

Tuesday 16 November 7:00pm - 9:00pm

**Community café Volunteers needed therefore closed until further notice**

**Bingo see article on page 1 Eyes Down for a Full House?**

#### Other events at the Village Hall

Saturday 18 September 7pm The Perfect2 (Beautiful South Tribute Act)

Saturday 23 October, 7pm The Moggies (60s Music/ Tribute Band)

Saturday 20 November, 7pm Rob Gee - Forget Me Not (Comedy Play)

#### St Bartholomew's Church: .Currently Weddings, Baptisms and Funerals only

There are hopes soon to open the church for an hour or two a week for private prayer and meditation.